



NATIONAL
MARROW
DONOR
PROGRAM®

Creating
Connections.

Saving Lives.

Save a Life. Save Mary Rizk.



The Need Is Great.
The Solution Is Simple.



More than **6,000** men,
women and children
search for a life-saving
donor each day

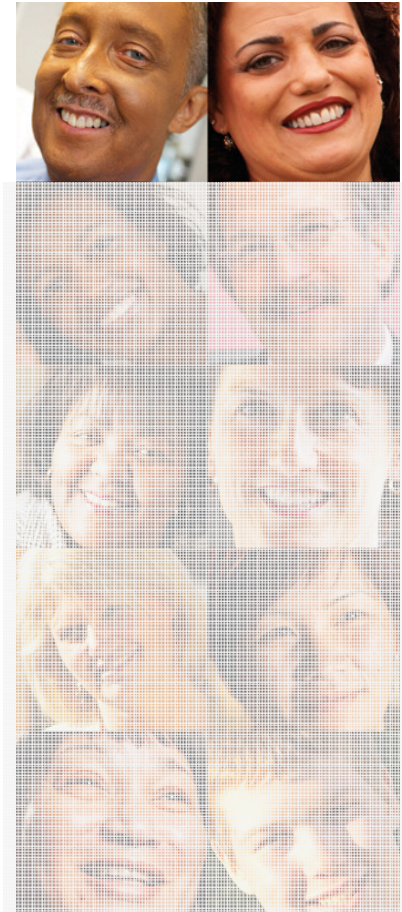
NATIONAL MARROW DONOR PROGRAM®

Creating Connections. Saving Lives.®



The Need Is Great. The Solution Is Simple

- Only 2 in 10 patients receive the transplant they need to save their lives
 - Many cannot find a matched donor
 - Others do not learn that transplant is a treatment option for them, or cannot overcome financial or other barriers to treatment



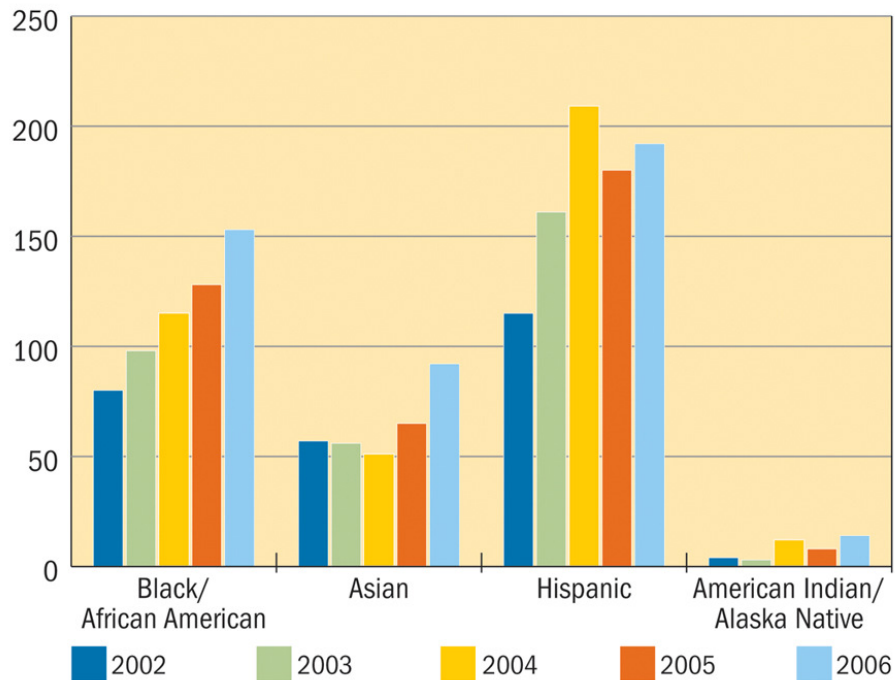
NATIONAL MARROW DONOR PROGRAM®

Creating Connections. Saving Lives.®



A Match For Every Patient. Hope For Every Family.

NMDP Transplant by Patient Race & Ethnicity

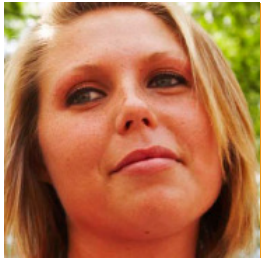


Source: National Marrow Donor Program FY 2006

- More patients from diverse racial and ethnic backgrounds are being served today
- However, they are still **less likely to find a match**

NATIONAL MARROW DONOR PROGRAM®

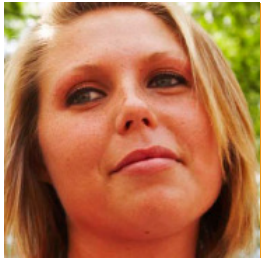
Creating Connections. Saving Lives.®



The Match Process



- A successful transplant relies on a marrow **donor's tissue type matching a patient's** as closely as possible
- The closer the match, the better for the patient

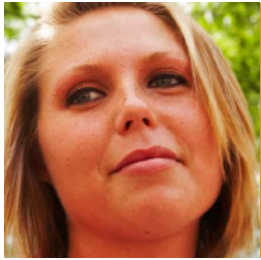


Mary Rizk, Your Sister in Need

- Mary Rizk, Doctor of Medicine and mother of 4, was diagnosed with acute leukemia on April 20, 2010. The only way to save her life is through a bone marrow transplant. Mary's hope for the future lies in identifying a volunteer donor who matches her HLA tissue typing. **Would you be that donor if called upon?** All it takes is a simple cotton swab of your inner cheek cells to see if you might be the match that can give Mary the hope of a cure and a chance for a future

NATIONAL MARROW DONOR PROGRAM®

Creating Connections. Saving Lives.®

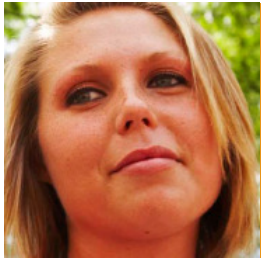


Mary Rizk: A Mother of 4



NATIONAL MARROW DONOR PROGRAM®

Creating Connections. Saving Lives.®

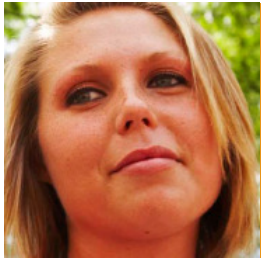


A Loving Wife



NATIONAL MARROW DONOR PROGRAM®

Creating Connections. Saving Lives.®



A Servant of Christ



NATIONAL MARROW DONOR PROGRAM®

Creating Connections. Saving Lives.®

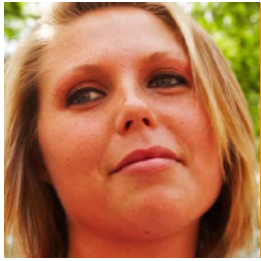


Guidelines for Joining the Registry

- All you need is to:
 - Be between the ages of 18 and 60
 - Meet the health guidelines
- Conditions that would make you ineligible to donate:
 - HIV or risk for HIV
 - Hepatitis or risk of hepatitis
 - Chronic lung disease
 - Most forms of heart disease or cancer
 - Insulin-dependent diabetes
 - Diseases that affect blood clotting or bleeding
 - Recent back surgery, or severe or ongoing back problems
 - Being a former organ or marrow transplant recipient
 - Current sleep apnea
 - Chronic asthma

NATIONAL MARROW DONOR PROGRAM®

Creating Connections. Saving Lives.®

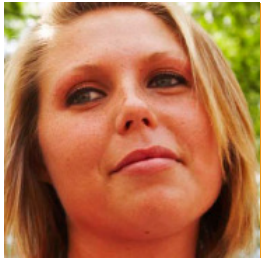


As an Egyptian, You Can Make the Difference

- Patients are most likely to match people who share their heritage. Though there are more multiple race patients than ever before, fewer than 225,000 out of a registry of 7 million members are multi-racial
- Mary Rizk needs people like you to give her hope for a cure--people whose roots transcend national, racial and ethnic boundaries
- Mary Rizk needs people who are willing to give a small part of themselves so that she can move from a room full of doctors to a room full of grandchildren

NATIONAL MARROW DONOR PROGRAM®

Creating Connections. Saving Lives.®



Donation Myths and Facts

MYTH

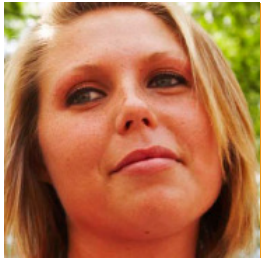
- All donations involve surgery

FACT

- The majority of donations do not involve surgery. Today, the patient's doctor most often requests a peripheral blood stem cell (PBSC) donation
- The second way of donating is marrow donation, which is a surgical procedure
- In each case, donors typically go home the same day they donate

NATIONAL MARROW DONOR PROGRAM®

Creating Connections. Saving Lives.®



Donation Myths and Facts, cont.

MYTH

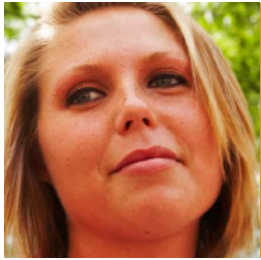
- Donating is painful and involves a long recovery

FACT

- There can be uncomfortable but short-lived side effects of donating PBSC donation
- Those donating marrow receive general or regional anesthesia, so they feel no pain during the donation. Marrow donors can expect to feel some soreness in their lower back, for one or two weeks afterward. Most marrow donors are back to their normal activities in two to seven days

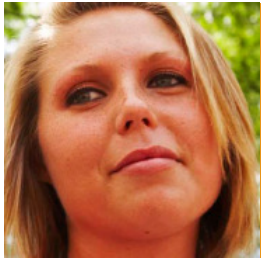
NATIONAL MARROW DONOR PROGRAM®

Creating Connections. Saving Lives.®



What You Can Expect on the Day of Donating

- You will fill out a Donor Registration and Consent for HLA Typing Form, which will be approved by a “Be the Match” representative
- Then you will use a cotton swab to take cheek samples in each of the quadrants of your mouth (upper and lower right side, upper and lower left side). A volunteer will explain the process in more detail on the day of registration
- And that’s it!



What if I am a Match?

- The goal is to find a donor's tissue type that matches the patient's as closely as possible
- If you are a close match, you will take a simple blood test, similar to blood tests in a doctor's office
- Then, if you are the closest match to the patient's tissue type, you will take a physical at your doctor's office to make sure you are healthy enough to be a donor
- From that point, you will then be counseled on donating your stem cells



BE THE MATCH

- If you meet the age and health criteria, please sign up to take the simple cheek swab test. You could make a huge difference and save a life
- Most of all, please keep Mary Rizk and her family in your prayers
- May God's will be done in this and in all things

NATIONAL MARROW DONOR PROGRAM®

Creating Connections. Saving Lives.®